

SELECT BOTANICAL

OLIVE LEAF

Technical-Scientific report

GENERAL INFORMATION

Select Botanical, SL manufactures highest quality extracts following strictest Quality Management System in compliance with the "Good Manufacturing Practices" requirements, carrying on the last manufacturing steps in classified areas (Clean Rooms).

Select Botanical, SL assures the traceability with rigorous analysis from raw material to finished product.

REGISTRY NUMBERS

CAS: 84012-27-1
EINECS: 232-277-0
INCI/ UE: OLEA EUROPAEA LEAF EXTRACT

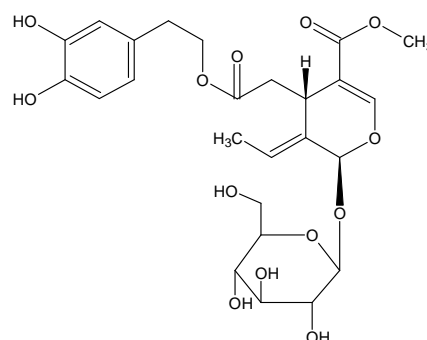
INFORMATION ABOUT PLANT ORIGIN

Botanical Description

Olea europaea is a small and evergreen tree, averaging 20 feet or more in height. It has many thin branches with opposite branchlets and shortly stalked, opposite, lanceolate leaves, acute, entire and smooth, pale green above and silvery below. The bark is pale grey and the flowers numerous, small and creamy-white in colour. Native to the Mediterranean Region.

Analytical marker / Active principle

Secoiridoids: Oleuropein



Oleuropein

SPECIFICATIONS/ TECHNICAL CHARACTERISTICS

Raw material

Definition:	Leaf of <i>Olea europaea</i> L.
Description:	
- Macroscopic	Complies Ph. Eur.current ed
- Microscopic	Complies Ph. Eur.current ed
Loss on drying:	≤ 10 % w/w
Pesticides:	Acc.to Ph. Eur. III current ed
Assay (HPLC)	Oleuropein

Composition of Extract Preparation

Native Dry Extract
Maltodextrin
Colloidal Silicon Dioxide

Extract Specifications

Loss on drying:	≤ 6 % w/w
Total ash:	≤ 10 % w/w
Heavy metals:	Analysis of Pb,Hg,Cd and As
Microbiological assay:	Acc.to Ph. Eur. current Ed. "5.1.8.Point B".
Residual solvents:	According to guidelines CPMP/ICH/283/95
Assay (HPLC):	Oleuropein

OLIVE LEAF

Technical -Scientific report

PHARMACOLOGICAL STUDIES

Oleuropein and hydroxytyrosol, two phenolic compounds contained in olive, are known to possess several biological properties, many of which may be related, partially at least, to their antioxidant and free radical-scavenger ability. ⁽¹⁰⁾

- sb Cardiovascular system effects: studies have shown that oleuropein possesses a wide range of pharmacologic and health promoting properties including antiarrhythmic, cardio-protective, hypotensive and anti-inflammatory effects. ⁽¹⁰⁾
- sb Hypoglycaemic activity: oleuropein leaf accelerates the intake of glucose to the cell. An ethanolic extract from olive leaves inhibited α -amylase. ⁽¹⁰⁾
- sb Hypocholesterolemic activity: hypocholesterolemic effect of oleuropein, oleuropein aglycone and hydroxytyrosol rich extracts might be due their abilities to lower serum TC, TG and LDL-C levels as well as slowing the lipid peroxidation process and enhancing antioxidant enzyme activity. ⁽¹⁰⁾

Oleuropein is therefore able to strongly reduce the action of UV rays on the skin, which is the main cause of the skin ageing and wrinkles. ⁽⁷⁾

PHYTOTHERAPY

Activities

Oral use:

- sb Antioxidant. ^(4, 6, 7, 10)
- sb Hypocholesterolemic. ^(5, 10)
- sb Hypoglycaemic ⁽¹⁰⁾
- sb Hypotensive. ^(1, 10)
- sb Coronary dilator. ^(1, 10)
- sb Antiarrhythmic. ^(1, 10)

Topical use:

- sb Antioxidant. ⁽⁷⁾

Indications:

Oral use:

- sb Indicated in the treatment of the arteriosclerosis, mild to moderate hypertension and hyperglycemia. ⁽¹⁾
- sb Traditional herbal medicinal product used to promote the renal elimination of water, in mild cases of water retention after serious conditions have been excluded by a medical doctor. ⁽⁹⁾

Topical use:

- sb Indicated in wrinkled skin (anti-ageing products). ⁽⁷⁾

Undesirable effects:

There are no reported toxic effects or intolerance phenomenon to normal use doses. ^(1,2)

Dosage and administration:

Oral use:

Olive Tree Extract may be found formulated in liquid and solid preparations for oral administration.

Topical use:

Olive Tree Extract may be found formulated in creams, emulsions and ointments, among others.

BIBLIOGRAPHY AND OTHER REFERENCES SOURCES

1. Fitoterapia. Vademecum de prescripción. Masson, S.A. 3º Ed. Barcelona. 1998
2. Blumental. The Complete German Commission E Monographs. Therapeutic Guide to Herbal Medicines. American Botanical Council. Austin, Texas 1998.
3. Zarzuelo, A., Duarte, J., Jiménez, J., Gonzalez, M., Utrilla, MP. " Vasodilator effect of olive leaf ". Department of Pharmacology, School of Pharmacy, University of Granada. Spain. Planta Med. 1991.
4. Guedon, D. Bernard le Totuor. "Antioxidative activities of *Olea Europaea* leaves and related phenolic compounds". Phytochemistry, Vol.31. Nº 4, pp 1173-1178. 1992.
5. De Pasquale, R., Monforte, M.T., Trozzi, A., Raccuia, A. "Effects of leaves and shoots of *Olea europaea* L. and oleuropein on experimental hypercholesterolemia in rat". Pharmaco-Biological Department, School of Pharmacy, Messina.
6. Visioli, F. Galli, C. "Oleuropein protects low density lipoprotein from oxidation" Life Sciences, Vol.55, Nº 24, pp 1965-1971, 1994.
7. Fedeli, E. "The antiradical property of the extracts from *Olea Europaea* leaves". COSNDG, 120, May/June (218-220).
8. Monografía OLIVO. Fitomedica. Plantas Medicinales y Salud Natural. Nº 15. 1998.
9. Community Herbal Monograph on *Olea europaea* L. folium. EMA/HMPC/430507/2009. EMA 2011.
10. Assessment report on *Olea europaea* L. folium, EMA/HMPC/430506/2009.EMA 2011



Information contained in this Technical Scientific Report is believed to be accurate and is offered in good faith for the benefit of the user of the product. Select Botanical, SL cannot assume any liability or risk involved in the use of its products since the conditions of the use are beyond our control. The user of our product is responsible for compliance with all legal regulations applying to the use of our products, including patent laws.

Revision: 01
January 2014